

**GONSIN®**  
Delivering Trust & Value

# TL-5600

Flush-mounting Combination  
Digital Conference System





# TL-5600 Flush-mounting Combination Digital Conference System

GONSIN TL-5600 digital conference system is designed to provide a versatile flush mounting solution including five function modules include basic module, simultaneous interpretation module, voting module, extended handheld voting keypad module, loudspeaker module. All these modules are self-contained and can be flexibly configured, enabling conference terminals to offer more or less functions. Discussion unit allows the delegate to talk and request to talk, with automatic video tracking and a RJ-45 expansion port for additional plug-and-play handheld voting keypad. Channel selection unit offers 6 channels for participants to hear the selected channel through a personal headphone and adjust the volume level for comfortable listening. Voting unit is used for attendance registration, voting, election and evaluation. Loudspeaker can be added to the discussion unit depending on the venue needs.





## ◆ System Features

### ◆ Flexible module-based solution

Five function modules can be stand-alone installed or easily combined to meet the exact customer needs, offering a versatile conference solution.



### ◆ Smart voice activation mode

The system can be operated under VOX mode so that the microphone is automatically turned on when the delegate speaks. VOX sensitivity can be set to H/M/L to suit conference environment. Voice activation mode enables hands-free operation without pushing the microphone button.



### ◆ Future-proof system expansion

TL-5600 system offers perfect solution to upgrade the system and extend more features when it's necessary. Expansion port is designed to easily connect plug-and-play handheld module.



## ◆ Product Features

- ◆ Elegant and fashion design
- ◆ Exquisite manufacturing process
- ◆ Flexible module-based solution
- ◆ Expansion interface for system upgrading
- ◆ LED indicator for working status
- ◆ Channel, volume and VOX sensitivity displayed on LCD screen
- ◆ Volume of loudspeakers can be set individually or together
- ◆ Multiple chairman or vice chairman units are allowed
- ◆ Support auto camera tracking function (SD and HD)
- ◆ Electret cardioid pickup pattern microphone, rich timbre
- ◆ Pluggable microphone stem with red indicator light ring
- ◆ Highly resistant to mobile phone interference



# ◆ Discussion Unit

TL-VDQ5600/ TL-VXQ5600

Delegate discussion unit (TL-VDQ5600) allows the delegate to talk, request to talk, and register attendance. 1 to 4 delegate microphones can be active simultaneously. Built-in loudspeaker automatically mutes when the microphone is turned on. Chairman discussion unit (TL-VXQ5600) has the additional priority button to override all active delegate units to control the conference. Multiple chairman and vice-chairman discussion units can be used in one system, and can be active at any time regardless of preset delegate microphone limit.



TL-VXQ5600

## ◆ Main Features

- ◆ Voice-activated microphone mode
- ◆ Low susceptibility to interference from mobile phones
- ◆ Pluggable gooseneck microphone stem
- ◆ Waterproof and dustproof design
- ◆ Long microphone pick-up range
- ◆ Red ring luminant to identify active unit
- ◆ Blue LED indicator for chairman or VIP

## ◆ Basic Functions

- ◆ Microphone mode: VOX/AUTO/FIFO/OPERATOR/Request to speak( with software)
- ◆ Unlimited number of chairman units or vice chairman units
- ◆ System supports hot-plugging
- ◆ Six kinds of detachable microphone stem for various conferences
- ◆ Support control speak time with software



- ◆ Anti-nonsel self design for extended interfaces, make it more durable
- ◆ Basic discussion unit comes with RJ45 extended interface for plug-and-play voting keypad to realize voting, election, evaluation functions
- ◆ Attendance: registration by keypress or late registration
- ◆ In VOX mode, microphones will be activated as users speak. VOX sensitivity (high/middle/low) and mic time-out(6-180 seconds) can be adjusted by the server. Besides the chairman unit, 4 delegate unit can be activated at the same time.
- ◆ Blue indicators of Chairman and vice chairman unit are always on.
- ◆ Optional HD video camera tracking matrix ,switcher or HD camera, can realize HD automatic camera tracking, supporting preset overall view
- ◆ 4\*1+1 video matrix is built in the Central Control Unit, and standard definition video conference camera is selected, which can realize automatic camera tracking function of standard definition and support preset overall view



TL-VDQ5600

Besides the function of delegate unit, chairman unit has following functions:

◆ **Technical Specifications**

|                        |                 |                       |             |
|------------------------|-----------------|-----------------------|-------------|
| Installation           | flush mounting  |                       |             |
| Frequency response     | 20Hz~20KHz      |                       |             |
| Max SPL                | 125dB (THD<3%)  |                       |             |
| Dynamic range          | 85dB            |                       |             |
| Sensitivity            | -46dB±4dB       |                       |             |
| THD                    | THD<0.05%       |                       |             |
| SNR                    | ≥96dB           |                       |             |
| Power                  | 24V             |                       |             |
| VOX Sensitivity        | High/Middle/Low | 77dB/80dB/82dB        | three modes |
| VOX auto mic time-out  | 6~180 seconds   |                       |             |
| Microphone stem length | 410mm(standard) | 310mm/510mm optional  |             |
| Dimension (L×W×H)      | 100mm×40mm×60mm |                       |             |
| Hole Dimension (L×W)   | 124±4×33±2      | table thickness ≥15mm |             |
| Weight                 | 0.08Kg          |                       |             |
| Working temperature    | 0~45°C          |                       |             |
| Storage temperature    | -20~50°C        |                       |             |





# Flush Voting Unit

BJ-Q5600

The flush voting unit allows the delegate to register attendance and cast a vote for YES/ABST/NO, evaluation and election. Votes are counted automatically and the result is shown on display equipment such as large screen, projector/screen and white board. Results can be printed out or saved in CD.

## Main Features

- ◆ Simple and stylish design
- ◆ LED indicator to show working status for attendance and voting
- ◆ Voting and evaluation options are defined by system software
- ◆ 30000V ESD protection circuit design
- ◆ Waterproof and dustproof design



## Basic Functions

- ◆ Utilize unique auto tracking validation and comprehensive calculation technology
- ◆ Multiple correction and encryption for data process, ensure the data security
- ◆ Maximum system capacity is 4096 units
- ◆ Attendance registration: by IC card, key press. Two-color LED indicator to indicate the registration method and status
- ◆ Voting: Yes/No /Abstain . Vote count and result display are enabled automatically by PC
  - Normal voting and direct voting
  - Single-choice and multiple-choice voting
  - First keypress and final keypress voting
- ◆ Election: elect one or more out of multiple candidates, with 'competitive election', 'equal number election' and 'quick election'
- ◆ Evaluation (opinion polls): Best, Good, Fair, Poor. Evaluation method can be defined by the system software
- ◆ LED indicator will indicate working status of voting, election and evaluation

## Technical Specifications

|                     |   |
|---------------------|---|
| Mounting type       | flush mounting                          |
| Powered             | by the central control unit             |
| Weight              | 0.08Kg                                  |
| Dimensions          | 100×40×60mm (W×D×H)                     |
| Hole Dimensions     | 124±4×33±2(L×W)    table thickness≥15mm |
| Working temperature | 0~45°C                                  |
| Storage temperature | -20~50°C                                |





# Handheld Voting Keypad

## BJ-K5600

Connecting the discussion unit via RJ-45 port, the handheld voting keypad allows the delegate to register attendance and cast a vote for YES/ABST/NO, evaluation and election. Votes are counted automatically and the result is shown on display equipment such as large screen, projector/screen and white board. Results can be printed out or saved in CD.



### Main Features

- ◆ Designed for ease of system expansion
- ◆ Handheld unit offers higher level of convenience and privacy
- ◆ LED indicators to show working status for voting
- ◆ Voting and evaluation options are defined by system software
- ◆ 30000V ESD protection circuit
- ◆ Waterproof and dustproof design

### Basic Functions

- ◆ Plug-and-play handheld voting keypad is connected to basic discussion unit by extended interface to realize voting, election and evaluation function
- ◆ Registration: support key press to register, LED indicator to indicate the registration status
- ◆ Voting: Yes/NO / Abstain. Vote count and result display are enabled automatically by PC
  - Normal voting and direct voting
  - Single-choice and multiple-choice voting
  - First keypress and final keypress voting
- ◆ Election: elect one or more out of multiple candidates, with 'competitive election', 'equal number election' and 'quick election'
- ◆ Evaluation (opinion polls): Best, Good, Fair, Poor, evaluation can be customized by the software
- ◆ LED indicator will indicate working status of voting, election and evaluation

### Technical Specifications

|                     |                               |
|---------------------|-------------------------------|
| Mounting type       | handheld                      |
| Extended interface  | RJ45                          |
| Dimensions          | 120×55×15mm(H×W×D)            |
| Weight              | 0.1Kg hand-held voting keypad |
| Working temperature | 0~45°C                        |
| Storage temperature | -20~50°C                      |





# ◆ Channel Selection Unit

TC-Q5600



The wired flushmount channel selection unit provides high immunity from interference and high security against unauthorized listening. Each unit comes with headphone jack and volume control so that the delegate can hear any selected channel on a personal headphone, and adjust volume level for comfortable listening.

## ◆ Main Features

- ◆ Simple and stylish look
- ◆ 30000V ESD protection circuit design
- ◆ Waterproof and dustproof design

## ◆ Basic Functions

- ◆ 6 selectable channels for interpretation
- ◆ Interpretation volume level can be adjusted individually, or centrally by CCU
- ◆ Selected channel number, volume and VOX sensitivity are shown on LCD
- ◆ Rich timbre

## ◆ Technical Specifications

|                     |                                     |
|---------------------|-------------------------------------|
| Mounting type       | flush mounting                      |
| Frequency response  | 20Hz~20KHz                          |
| THD                 | <0.05%                              |
| SNR                 | ≥96dB                               |
| Channel number      | 6 channels                          |
| Powered             | by the central control unit         |
| LCD                 | Dimensions: 17mm×14mm               |
| Earphone jack       | 3.5mm jack stereo                   |
| Dimension (W×D×H)   | 100mm×40mm×60mm                     |
| Hole Dimension(L×W) | 124±4×33±2 ( table thickness≥15mm ) |
| Weight              | 0.06Kg                              |
| Working temperature | 0~45°C                              |
| Storage temperature | -20~50°C                            |





# Loudspeaker

SPK-10



The flush loudspeaker delivers natural and clear sound. When it is used with the flush discussion unit, any smaller conference can be held without external sound equipment.

## Main Features

- ◆ Simple and stylish design
- ◆ High-definition audio processing
- ◆ 30000V ESD protection circuit MIC is turned on

## Basic Functions

- ◆ Loudspeaker volume level can be adjusted individually, or centrally by CCU
- ◆ Human-friendly inclination angle, make its performance better

## Technical Specifications

|                     |                                  |
|---------------------|----------------------------------|
| Mounting type       | flush mounting                   |
| Powered             | 2W/8Ω                            |
| Frequency response  | 200Hz~16KHz                      |
| Sensitivity         | 89dB                             |
| Powered             | by the central control unit      |
| Dimension(W×D×H)    | 100mm×100mm×60mm                 |
| Hole Dimension(L×W) | 124±4×33±2(table thickness≥15mm) |
| Weight              | 0.09Kg                           |
| Working temperature | 0~45°C                           |
| Storage temperature | -20~50°C                         |





## **Connector**

### CON-5600

The CON-5600 connector is designed to connect control units to function modules including discussion unit, channel selection unit, flush voting unit and/or loudspeaker for power supply and communication signals.



## **Technical Specifications**

|                     |              |
|---------------------|--------------|
| Working temperature | 0~45℃        |
| Storage temperature | -20 ~ 50℃    |
| Dimensions (WxDxH)  | 210x160x40mm |
| Net weight          | 1083 g       |





**Preview of 5600 series  
with multiple combination  
functions**

**Basic Discussion Module**



TL-VDQ5600



TL-VDQ5600+SPK-10

**Discussion&Voting Module**



TL-VDQ5600+BJ-Q5600



TL-VDQ5600+  
BJ-Q5600+SPK-10



TL-VDQ5600+BJ-K5600



TL-VDQ5600  
+BJ-K5600+SPK-10

**Discussion&Interpretation Module**

**Voting&Interpretion Module**



TL-VDQ5600+TC-Q5600



TL-VDQ5600+  
TC-Q5600+SPK-10



BJ-Q5600+TC-Q5600

**Discussion & Voting & Interpretation Module**



TL-VDQ5600  
+BJ-Q5600+TC-Q5600



TL-VDQ5600+BJ-Q5600  
+TC-Q5600+SPK-10



TL-VDQ5600+BJ-K5600  
+TC-Q5600



TL-VDQ5600+BJ-K5600  
+TC-Q5600+SPK-10



# Central Control Unit



The brand new design GONSIN central control unit adopts integrated tempered glass panel and navigational rotary knob design, clear layout and user-freindly. One central control unit is able to accommodate 60-70 microphones. By cascading extension units, the system can support upto 4096 conference units. The central control unit has built-in 4×1 SD video matrix, to support SD video tracking with adding SD cameras; it also supports extended HD video matrix. Built-in DSP digital audio processor is used for feedback prevention, when the sound environment is not ideal, turn on DSP function to avoid feedback. Built-in treble/bass compensation for better sound quality. VOX sensitivity, built-in loudspeaker volume and LCD screen contrast are adjustable by central control unit or by each unit. Unit ID number writing is also included.

## ◆ Features

- ◆ Black tempered glass panel design, simple and high-end design. All the function divisions are clearly layout and easy to operate.
- ◆ Built-in DSP processor for acoustic feedback prevention.
- ◆ Built-in OLED screen to display system set status.
- ◆ VOX sensitivity adjustable.
- ◆ Built-in 4×1 SD video matrix, and support extended HD video matrix.
- ◆ Supportive SD and HD camera tracking.
- ◆ Built-in treble/bass compensation for better sound quality.
- ◆ Support clock and calendar function,
- ◆ Support plug-in USB disk for audio recording.





# Central Control Unit

TL-Z4



## Basic functions

- ◆ In compliance with IEC60914 international standard
- ◆ With full digital audio technology, built-in high-speed CPU and high-performance DSP digital audio processor, CD sound quality.
- ◆ Acoustic frequency response can up to 20Hz~20KHz.
- ◆ Black tempered glass panel design, simple and high-end design. All the function divisions are clearly layout and easy to operate.
- ◆ The sever comes with built-in OLED panel to display system status, active mic, speaking mode. Language supports Chinese/ English. Russia, Spanish can be customized.
- ◆ Navigation knob for more convenient operation and management
- ◆ 4 route port to connect conference units, the system has auto-repair function, support hot plug-and-play.
- ◆ One central control unit is able to accommodate 60-70 microphones. By cascading extension units, the system can support upto 4096 conference units.
- ◆ Universal voltage power switch for wider usable range and sufficient power supply.
- ◆ Support USB auto recording: after the front panel is inserted U disk, audio recording can be set automatically or manually. The recording status can be displayed in real time.
- ◆ Optional HD video camera tracking matrix ,switcher or HD camera, can realize HD automatic camera tracking, supporting preset overall view.
- ◆ 4\*1+1 video matrix is built in the Central Control Unit, and standard definition video conference camera is selected, which can realize automatic camera tracking function of standard definition and support preset overall view.
- ◆ Input port for external audio signal: for alarm audio, PA, and other audio systems, the conference units can output audio signals synchronously.
- ◆ Internal clock and calendar, it will be displayed on central control unit, conference units.
- ◆ Built-in auto-detection fo conference units; before conferences, self-test can be run for each conference units.
- ◆ TCP/IP PC communication between central control unit and PC, which can achieve control management, remote fault diagnosis and remote update.

### ■ Stand-alone Mode Functions:

- ◆ ID number writing: the conference system supports automatically or manually assign ID to the corresponding equipment.
- ◆ All or individual units' VOX sensitivity are adjustable (apply to 5600 series)
- ◆ LCD screen contrast of Unit is adjustable (apply to 4200 series)



- ◆ Speaking mode: Operator, Auto, FIFO, VOX, request to speak (with software).
- ◆ VOX function: in VOX mode, the unit will be activated when user speaks; VOX sensitivity can be adjust by the server ( high, middle, low); microphone time-out is adjustable ( 6-180 seconds).
- ◆ 1-4 delegate unit can be used simultaneously (except chairman unit); chairman/vice chairman unit are not subject to active mic limit, it's allowed to open at any time.
- ◆ The system can have multiple chairman units; delegate unit can be set as vice-chairman units. There are unlimited chairman and vice-chairman units.

#### ■ Extended functions under PC and software control

- ◆ Register function and real-time participants statistics.
- ◆ Centralized conference management, operator can allow or reject delegate request to talk.
- ◆ Speaking time limit can be preset for conference units; After the speaking time is up, the conference unit will be off.
- ◆ Conference audio recording and video recording(need audio video capture card)
- ◆ Delegate unit can be set to be vice-chairman units by software; vice-chairman unit is not subject to active mic limit.
- ◆ Support management software dual-system hot backup function; One control computer can be set as backup and connect to the system; if the current computer has faults, the backup computer can be automatically hosted to ensure the smooth and continuous meeting.
- ◆ Conference management software can be customized.

## ◆ Central Control Unit

TL-ZB4



### ◆ Basic functions

#### ■ Based on functions of Central Control Unit TL-Z4, Central Control Unit TL-ZB4 has functions below: Extended functions under PC and software control

- ◆ Voting: Yes, No, Abstain . Vote counting and result display are enabled automatically by PC
  - Single-choice and multiple-choice voting
  - First key-press and final key-press voting
- ◆ Election: elect one or more out of N candidates, with 'competitive election', 'equal number election' and 'quick election'
- ◆ 4-key evaluation: Good, Fair, Poor, Abstain.
- ◆ Utilize multi-level error correction and data encryption technique to ensure information security.
- ◆ Customized voting options and voting methods, support customized language mode or display screen.



## ◆ Central Control Unit

### TC-Z4



### ◆ Basic functions

- Based on functions of Central Control Unit TL-Z4, Central Control Unit TC-Z4 has functions below:
  - ◆ Language interpretation: 1+5 channels.
  - ◆ Acoustic frequency response can up to 20Hz~20KHz.
  - ◆ With interpreter unit and language distribution port, it can connect Gonsin IR simultaneous interpretation system or FS-FHSS wireless simultaneous interpretation system for compatible use.

## ◆ Central Control Unit

### TC-ZB4



### ◆ Basic functions

- Extended functions under PC and software control
  - ◆ Voting: Yes, No, Abstain . Vote counting and result display are enabled automatically by PC
    - Single-choice and multiple-choice voting
    - First key-press and final key-press voting
  - ◆ Election: elect one or more out of N candidates, with 'competitive election', 'equal number election' and 'quick election'
  - ◆ 4-key evaluation: Good, Fair, Poor, Abstain.
  - ◆ Utilize multi-level error correction and data encryption technique to ensure information security.
  - ◆ Customized voting options and voting methods, support customized language mode or display screen
  - ◆ Language interpretation: 1+5 channels.
  - ◆ Acoustic frequency response can up to 20Hz~20KHz.
  - ◆ With interpreter unit and language distribution port, it can connect Gonsin IR simultaneous interpretation system or FS-FHSS wireless simultaneous interpretation system for compatible use.



## ◆ Technical Parameters

|                             |   |
|-----------------------------|---|
| Max System Capacity         | 4096  |
| Standard Capacity           | 60~70(different from various models)                                  |
| Acoustic Frequency Response | 20Hz~20KHz  |
| SNR                         | >96dBA  |
| Channel Isolation           | >85dB   |
| Dynamic Range               | >94dB   |
| THD                         | <0.05%  |
| Power                       | AC100~240V 50/60Hz  |
| Audio Port                  | 1 balanced (XLR)<br>2 unbalanced (RCA)                                |
| Max Audio Output            | LINE OUT : +20 dBu unbalanced<br>BLANCE OUT : +20 dBu balanced        |
| Output Impedance            | >1KΩ  |
| External Audio Input        | 0.775V (PHOENIX terminal)   |
| Central Control Method      | RS-232  |
| PC Connection Method        | TCP/IP  |
| Camera Control Method       | RS-485  |
| Max Power Consumption       | 300W  |
| Terminal Connection Port    | 8-pin×4<br>13-pin×4 (for TC-Z4,TC-ZB4 only)                           |
| Channel selection           | 6 (for TC-Z4,TC-ZB4 only)   |
| Display Screen              | OLED (61mm×37mm)  |
| Audio recording port        | USB (USB FAT32)   |
| Audio recording File Size   | 0.8M/m  |
| Active Delegate             | 1/2/3/4 (not including chairman unit)                                 |
| VOX sensitivity             | H/M/L (76dB/80dB/82dB)  |
| Support Camera Number       | 4 SD cameras (built-in SD matrix), MAX 8 cameras with extended matrix |
| Video Input Port            | RCA×4 (1Vp-p 75Ω)   |
| Video Output Port           | RCA×2 (1Vp-p 75Ω)   |
| Camera Tracking Protocol    | PELCO-P/PELCO-D/VISCA   |
| Operating Temperature       | -0~45℃  |
| Storage Temperature         | -20~50℃   |
| Dimensions (L*W*H)          | 485mm×350mm×90mm  |
| Installation                | Desktop or 19" rack mounting  |
| Weight                      | 7.6Kg   |





# Extension Unit ZJ-KR



## Basic functions

- ◆ Confirm to IEC 60914 international standard.
- ◆ With full digital audio technology, built-in high-speed CPU and high-performance DSP digital audio processor.
- ◆ Black tempered glass panel design, simple and high-end design. All the function divisions are clearly layout and easy to operate.
- ◆ Three routes 8-pin ports to connect conferenc units, another two route 8-pin port for system cascading.
- ◆ Three routes 13-pin ports to connect conferenc units, another two route 13-pin port for system cascading.
- ◆ Automatic restoration function: support hot plug and play.
- ◆ One central control unit is able to accommodate 60~70 units. By cascading extension units, the system can support upto 4096 conference units.
- ◆ Universal voltage power switch for wider usable range and sufficient power supply.

## Technical Specifications

|                          |                                      |
|--------------------------|--------------------------------------|
| Max System Capacity      | 4096                                 |
| Standard Capacity        | 60~70(different from various models) |
| Power                    | AC100~240V, 50/60Hz                  |
| MAX Power                | 300W                                 |
| Terminal Connection Port | 8-pin ×5, 13-pin×5                   |
| Operating Temperature    | 0~45°C                               |
| Storage Temperature      | -20~50°C                             |
| Dimensions (L*W*H)       | 485mm×350mm×90mm                     |
| Installation             | Desktop or 19" rack mounting         |
| Weight                   | 7.6Kg                                |



# **GONSIN Digital Conference Management System V7.1.0**

## **Basic functions**

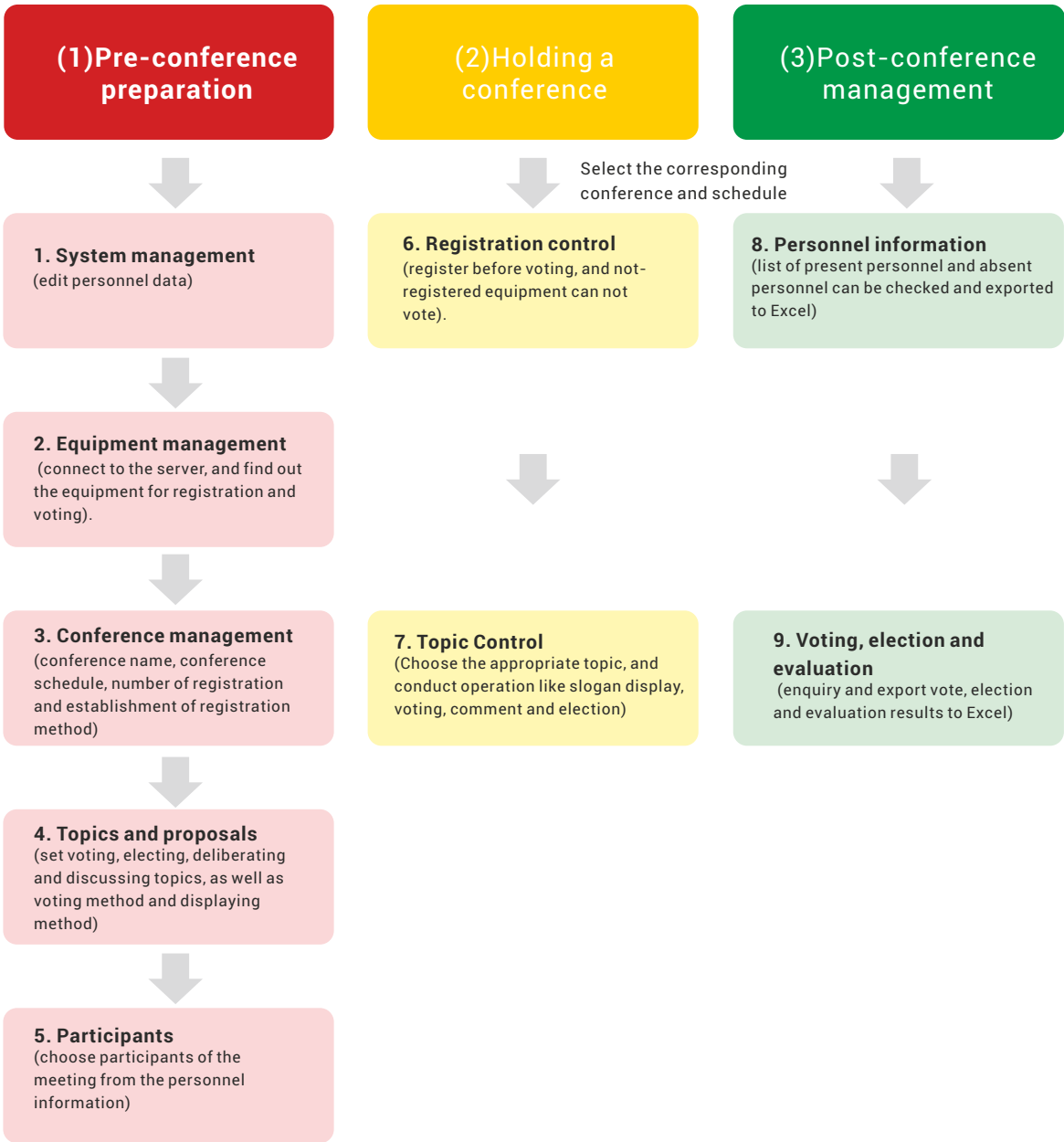
- ◆ It supports main screen and split screen display; the software interface can be synchronized to the large screen; supports screen resolution adaptation.
- ◆ It has abundant functions, and realizes different software module functions when connected to different matching products; software module customization is available.
- ◆ It is compatible with GONSIN's other equipment, so that data is interconnected between wired products/wireless products/multiple product formats/multiple systems
- ◆ It has Super Dog Data Encryption; LicenseOnChip technology ensures that the license can not be tampered; it support AES algorithm encryption. Using ECC key exchange technology to ensure conference data transmission under encryption protection
- ◆ It has serial number authorization function; when super dog encryption is not used, you can use the software by getting the officially granted authorization code.
- ◆ Log in through the user's account and password; level-oriented management, prohibiting external personnel tampering or leaking conference information. Support different user type settings, including operating users, managing users, backup users, etc.
- ◆ Different languages are available, including Chinese, English and Russian. With language customization function, visual language editing interface, easy for translators to edit and proofread; supports language packet import / export.
- ◆ It has equipment management function, and supports online monitoring of system servers and conference equipment. Support centralized management of equipment, realizing equipment power detection, operation status detection , unified shutdown and other operations
- ◆ It supports personnel data input, including name, photo, position, unit number, seat number, custom type and so on. It supports two modes: online creation and offline creation.
- ◆ It supports auto camera tracking settings; you can choose from a variety of camera/matrix types and switch to corresponding control protocol. Preset bit information can be imported and exported, easy to save and invoke.
- ◆ It supports to create new venues or to open existing venues, and set up the venue background map and arrange seats. The seat setting is suitable for all meetings, and can be invoked through the conference schedule.
- ◆ It supports writing card devices for IC card reading and writing. The card writing device is suitable for all meetings.
- ◆ It supports to create conference name and schedule, and a variety of check-in modes are available, including the key-press registration, card registration, and no card registration.
- ◆ You can set conference topics and related content, including slogans, votes, discussions, manuscripts (support office document insertion) and so on.
- ◆ It supports voting, evaluation, election, grading, and fast election; voting options can be customized, and supports the setting of named voting, secret voting, and weight voting; working with paperless system, it will has the multi-topic batch voting function
- ◆ Support screen customization; you can set text font, color, picture and data association in the visual editing interface. Support for fast switching of multiple interface styles
- ◆ Initiate a conference through the software, supporting personnel registration, slogan display, text display, enter the discussion, start voting and other operations
- ◆ The software supports conference microphone control. It can set speech mode, application, number of speakers, speech time, seat display mode and large screen display mode in real time.
- ◆ The software supports post-conference information processing, and the list of conference personnel, the results of topics and proposals, and documents produced during the conference can be exported and printed. It supports uploading historical data from the cloud (only for some supporting products).
- ◆ Support for the tailor-made software development; interface protocol can be opened to achieve customized development according to needs of the project.



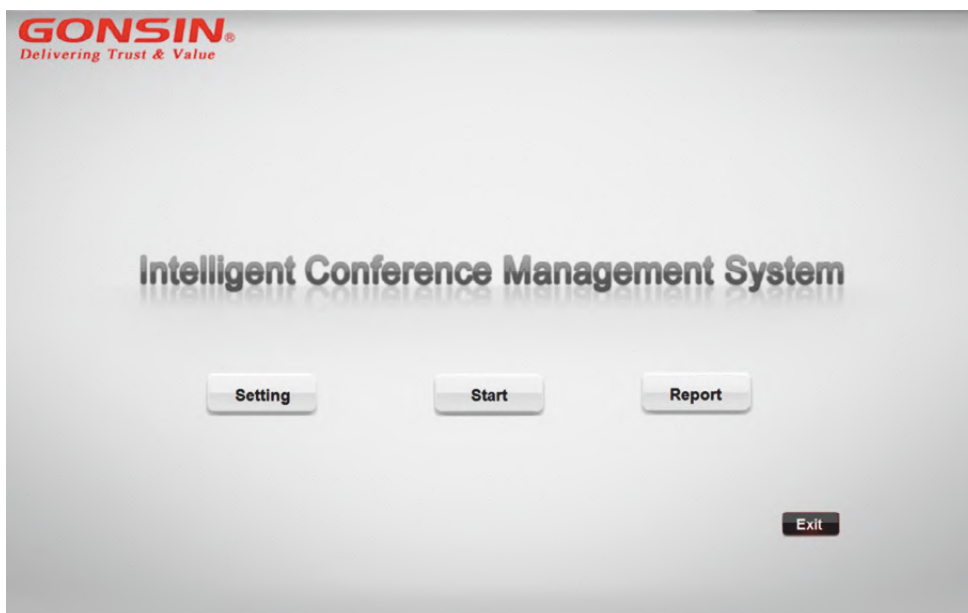
Technical Parameter

|                         |   |
|-------------------------|---|
| Operation system        | WIN7/WIN8/WIN10 operation system 32/64 bit  |
| Video card              | Independent graphics card supports VGA\HDMI\DVI interface, supporting display and split screen. |
| CPU                     | i5 or above   |
| Hard disk capacity      | 500GB or above  |
| memory capacity         | 4GB or above  |
| PC interface            | 1 way RS-232 interface; 2 way RJ45 interface  |
| Resolution ratio        | adaptive  |
| Video tracking protocol | PELCO-P/PELCO-D/VISCA   |
| PC communication method | Ethernet/RS-232   |

Function Introduction







## Function Introduction

According to the conference process, it has three main modules: 【Pre-conference settings】 , 【Holding a conference】 and 【Post-conference management】 . The interface is concise and convenient to operate.

### ■ Pre-conference preparation

Input pre-conference information, including: equipment management, personnel information, camera settings, seating settings, card writing equipment, language settings, conference information, topics and proposals, participants, screen customization, etc.

### ■ Hold a conference

Support sub-screen display and system control during the conference, including: registration management, topics management, discussion control, etc.

### ■ Post-conference management

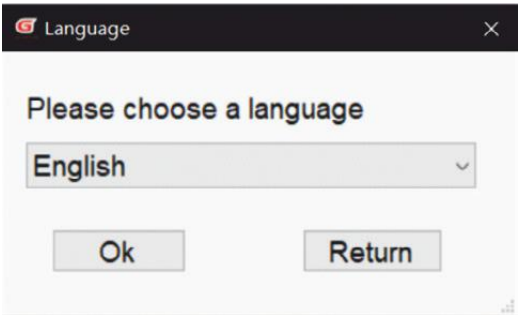
Support information processing after the conference, including: personnel information (list statistics, personnel check, number printing, report printing, etc.), voting results (voting, evaluation, election, grading results check and printing).

- Compatible with other equipments of GONSIN system, capable for working with multiple equipment of varied models. Based on network design, it is suitable for use on WIN7/WIN8/WIN10 operating system.

- Use AES algorithm encryption and ECC key exchange technology, ensuring conference data transmission under encryption protection.

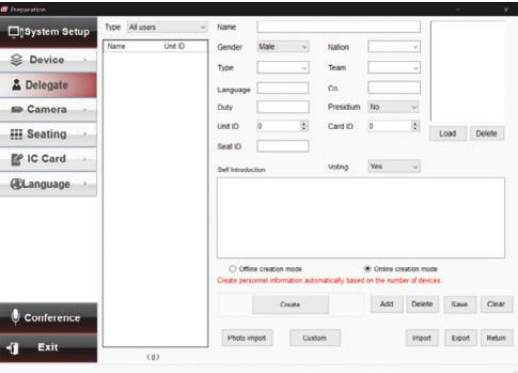


System settings

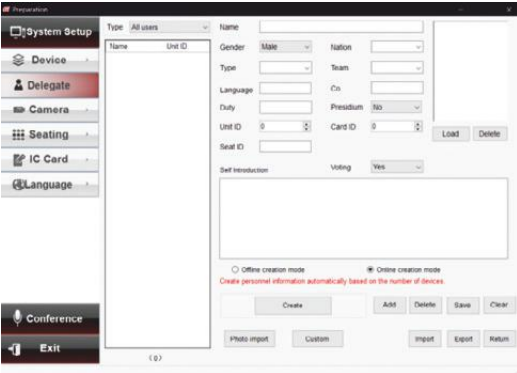


**Support multiple languages:**  
You can choose from Chinese, English and Russian. Through language customization function, you can customize other language interface; it supports for language packet import / export

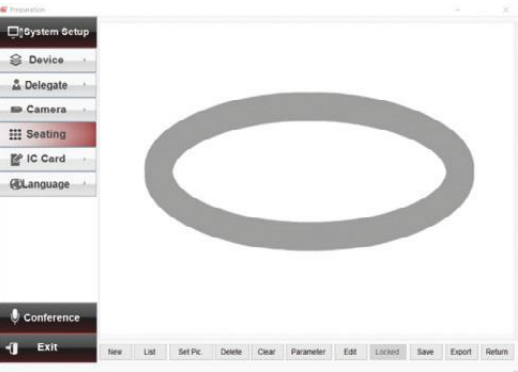
Pre-conference preparation



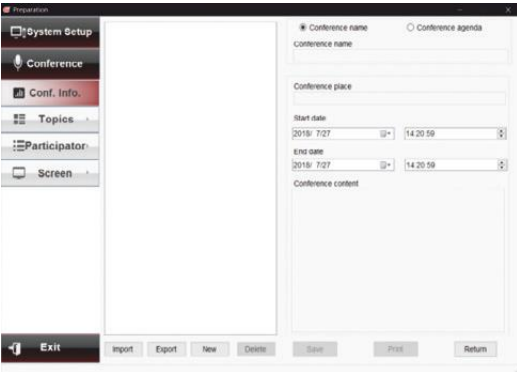
**Personnel information:**  
Input information of participants, including name, photo, position, unit number, seat number, custom type, etc. Support online and offline creation



**Camera settings:**  
Set up auto camera tracking of the conference equipment.

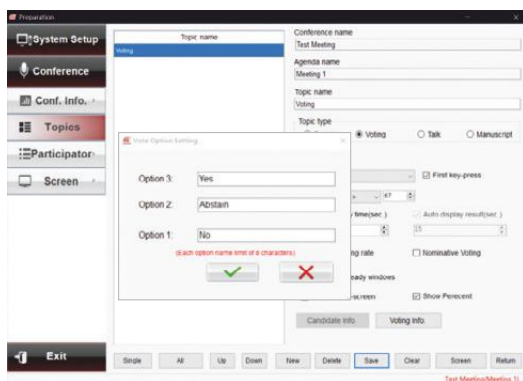


**Seat setting:**  
The layout of the equipment is arranged according to the on-site seats, and you can monitor the process of the conference directly.



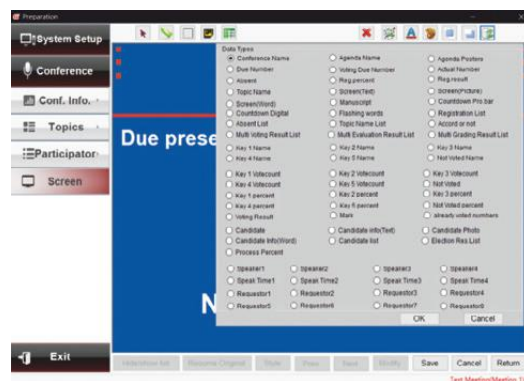
**Conference information:**  
Create or edit conference names and schedules





### Topics and proposals:

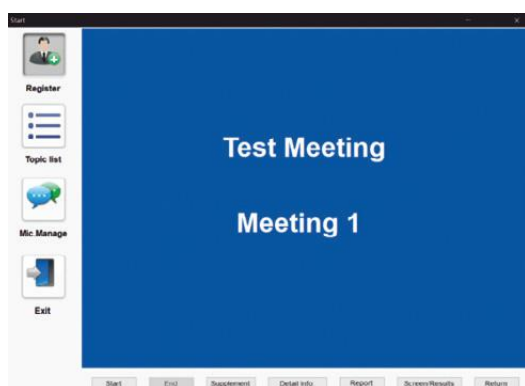
Create or edit topics and proposals. Topics items can be customized. Including slogans, voting, discussion, manuscripts and other settings, more flexible use.



### Customizable Screen:

Users can set the relevant contents of the screen display, You can set text font, color, picture and data association in the visual editing interface. Support for fast switching of multiple interface.

## Hold a conference



### Registration:

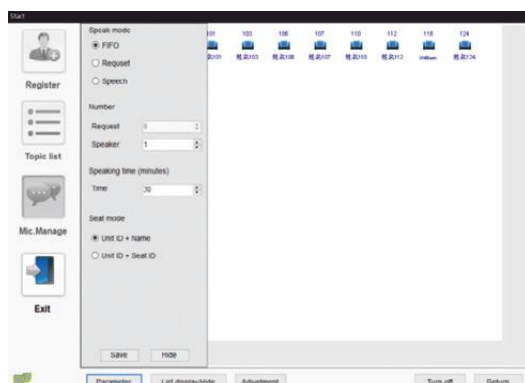
Carry out conference registration function, and support key-press registration, card registration and other registration methods

\* some devices do not support card registration



### Vote:

The function of meeting voting can be realized by means of voting, deliberation, election, grading, quick election, and custom voting items.



### Discussion:

Speaking parameters can be set in real time, such as speaking mode, application, number of speakers, speaking time, seat display mode and large screen display mode.



Post-conference Management

| Report      | Name | Gender | Unit ID | Card ID | Seat ID | Type | Company | Delegation |
|-------------|------|--------|---------|---------|---------|------|---------|------------|
| Reg. Info.  | 姓名   | 性别     | 单元ID    | 卡ID     | 座位ID    | 类型   | 公司      | 代表团        |
| Voting      |      |        |         |         |         |      |         |            |
| List detail |      |        |         |         |         |      |         |            |
| Election    |      |        |         |         |         |      |         |            |
| Evaluation  |      |        |         |         |         |      |         |            |
| Grading     |      |        |         |         |         |      |         |            |
| Files       |      |        |         |         |         |      |         |            |
| Exit        |      |        |         |         |         |      |         |            |

After the meeting, you can search and print the results of the conference registration, vote, election, appraisal and grading.

|             |  |
|-------------|--|
| Report      |  |
| Reg. Info.  |  |
| Voting      |  |
| List detail |  |
| Election    |  |
| Evaluation  |  |
| Grading     |  |
| Files       |  |
| Exit        |  |

Export the annotated Agenda files:

Save As

Save

It supports post-conference information processing, and you can export and print the list of participants, the results of the topics and proposals, and the documents produced during the meeting. It supports uploading historical data from the cloud (only for some supporting products).





# Interpreter Console

TC-F06/16

Interpreter Console is an indispensable part of simultaneous interpretation system, which is used for simultaneous translation of conference speeches by interpreters. When using, the interpreter can only connect the interpreter console with the simultaneous interpreting main control unit / discussion main control unit, and the translated speech can be transmitted to the main control unit through the interpreter unit. Through the processing and transmission by the system, the participants can listen to the speech content of various languages through the receiving unit / discussion unit. There are two types of the interpreter console Interpreter Console, which support 6 to 16 languages simultaneous interpretation.

## Basic Functions

- ◆ Support up to 6/16 channels simultaneous interpretation
- ◆ LCD screen can display various information
- ◆ Support direct interpretation and relay interpretation
- ◆ Support dual microphone translation in turn
- ◆ With microphone selection function
- ◆ 3 output volume levels adjustable
- ◆ Interpretation timing function
- ◆ Speaking speed remind function
- ◆ Pluggable dual soft tubes gooseneck microphone stem



## Basic Functions

- ◆ In compliance with IEC60914 international standard
- ◆ The design of physical buttons / knobs are sensitive with good touch, with long service life and without mechanical button sound
- ◆ It adopts 25P parallel port (1 male and 1 female) cable for hand-in-hand connection
- ◆ Automatic restoration function: supports hot plug
- ◆ Support 16 channels simultaneous interpretation(including the floor channel)
- ◆ Support direct interpretation and relay interpretation
- ◆ High brightness 128×64 graphic LCD screen with backlight: display setting information ,input and output channel information
- ◆ With channel selection button, it is convenient to select the language from all the input language channels
- ◆ With the indicator of FLOOR/RELAY input channel
- ◆ 3 input channels can be preset with corresponding shortcut button and input channel occupancy indicator
- ◆ 2 output channels can be preset with corresponding shortcut buttons. When all interpreter consoles are closed, the output channel can automatically switch to the floor channel
- ◆ Standard cardioid directional electret microphone with indicator ring; multiple soft gooseneck microphone stems can be selected (standard: 410mm, optional:310mm/510mm)
- ◆ Pluggable microphone stem; During the meeting recess, it can be disassembled for equipment maintenance.



- ◆ Built-in 2W loudspeaker with volume switch; Can play the floor channel or interpreted channel language
- ◆ With the same channel interlock function, when the output channel is preset, the occupied channel will skip automatically.
- ◆ MUTE key to enable a brief muting of the microphone for cough cut
- ◆ Speaking speed remind function, the interpreter can press the "slow" key to remind the speaker to slow down the speaking speed (The microphone's indicator ring or screen will flash)
- ◆ Left and right headphone output jack (3.5 mm×2), connect the headset to listen to the floor or interpreted channel language, with left and right selection buttons; headphone volume is adjustable
- ◆ Left and right microphone input jack (3.5 mm×2), can be connected to external microphone, with left and right selection buttons, to meet different usage scenarios
- ◆ Left and right recording output jack (3.5 mm×2), can be connected to recording device, with left and right selection buttons, the output audio depends on the channel listened by the interpreter console
- ◆ Highly resistant to mobile phone interference
- ◆ Interpretation timing function (timing unit: hour/minute)

## ◆ Technical Specifications

|                        |   |
|------------------------|---|
| Installation Way       | Desktop                                     |
| Connection Way         | Specialized 25 core connector               |
|                        | Size: 65mm × 32mm                           |
| Display Specifications | Lattice: 128 × 64                           |
|                        | Backlight: blue background white characters |
| Frequency Range        | 20Hz~20KHz                                  |
| Sensitivity            | -46 dBV/Pa                                  |
| Equivalent Noise Level | 20dBA(SPL)                                  |
| Max. SPL               | 125dB(THD<3%)                               |
| THD                    | <0.05%                                      |
| SNR                    | ≥96dB                                       |
| Microphone Type        | Cardioid directional electret               |
| Directivity            | 0°/180°: >20 dB (1 kHz)                     |
| MIC Stem Length        | 410mm (standard); 310mm/510mm (optional)    |
| Input Impedance        | 2KΩ   |
| Headphone Output Jack  | 3.5 mm jack×2                               |
| Microphone Input Jack  | 3.5 mm jack×2                               |
| Recording Output Jack  | 3.5 mm jack×2                               |
| Headphone Load         | >16Ω  |
| Headphone Volume       | 10mW  |
| Built-in Loudspeaker   | 2W/8Ω                                       |
| Channel Number         | 6/16 channel (including the floor channel)  |
| Power supply           | 24V   |
| Max. Power Consumption | <5W   |
| Dimensions(L×W×H)      | 247mm×145mm×95mm(Not including the stem)    |
| Net weight             | 1.2Kg                                       |
| Working Temperature    | 0~45°C                                      |
| Storage Temperature    | -20~50°C                                    |



## Accessories

### Monaural Headphone TC-D1

|                         |                                 |
|-------------------------|---------------------------------|
| Color                   | Black ring with embedding metal |
| Type                    | Monaural mono headphone         |
| Interface               | 3.5mm                           |
| Impedance               | 40Ω±10%                         |
| Frequency reponse range | 7 Hz - 24KHz                    |
| Voltage                 | 0.4V                            |
| Input power             | 8-50mW                          |
| Distortion rate         | <5%                             |
| Sensitivity             | L102dB±3dB                      |



### Stereo Headphone TC-D3

|                         |                  |
|-------------------------|------------------|
| Color                   | Black            |
| Type                    | Stereo headphone |
| Interface               | 3.5mm            |
| Impedance               | 32Ω±15%          |
| Frequency reponse range | 20-20KHz         |
| Voltage                 | 0.8V             |
| Input power             | 30-50mW          |
| Distortion rate         | <5%              |



### Interpreter Headset TC-D4

|                         |                |
|-------------------------|----------------|
| Color                   | Black          |
| Type                    | Stereo headset |
| Interface               | 3.5mm          |
| Impedance               | 32Ω±15%        |
| Frequency reponse range | 20 - 20000Hz   |
| Voltage                 | 0.8V           |
| Input power             | 30-50mW        |
| Distortion rate         | <1%            |



### IC Card Encoder SRD-U100

Support read out and write down information, reset password

|              |                |
|--------------|----------------|
| Speed        | <0.2s          |
| Interface    | USB            |
| Installation | Flush-mounting |





◆ **IC Card BL7442**

Each card has a unique 32-bit serial number and independent password and access control. Users can set different password with software, one card for appointed conference. Data can be preserved up to 10 years and a card can be rewritten up to 100 thousand times with unlimited reading times.

|                       |                        |
|-----------------------|------------------------|
| Dimensions            | 85.6x53.98x0.8 (LxWxD) |
| Operating temperature | -20°C to 50°C          |



◆ **Extension Cable 13PS-03/05/10/15/20**

|  |                      |
|--|----------------------|
| Color  | Black                |
| Type   | 13PS                 |
| Connectors   | One male, one female |
| Length   | 3/5/10/15/20m        |
| Note: Choose in according to the conference demand |                      |



◆ **Connection Cable 13P-T3**

|                                |                      |
|--------------------------------|----------------------|
| Color                          | Black                |
| Type                           | 13PS                 |
| Connectors                     | Two male, one female |
| Length                         | 1.5+1.2m             |
| Note: For each discussion unit |                      |



◆ **Extension Cable 8PS-03/05/10/15/20/40**

|  |                      |
|--|----------------------|
| Color  | Black                |
| Type   | 8PS                  |
| Connectors   | One male, one female |
| Length   | 3/5/10/15/20/40m     |
| Note: Select in according to the conference demand |                      |



◆ **Connection Cable 8P-T3**

|   |                      |
|---|----------------------|
| Color                                   | Black                |
| Type                                    | 8PS                  |
| Connectors                              | Two male, one female |
| Length                                  | 1.5+1.2m             |
| Note: one piece for one discussion unit |                      |



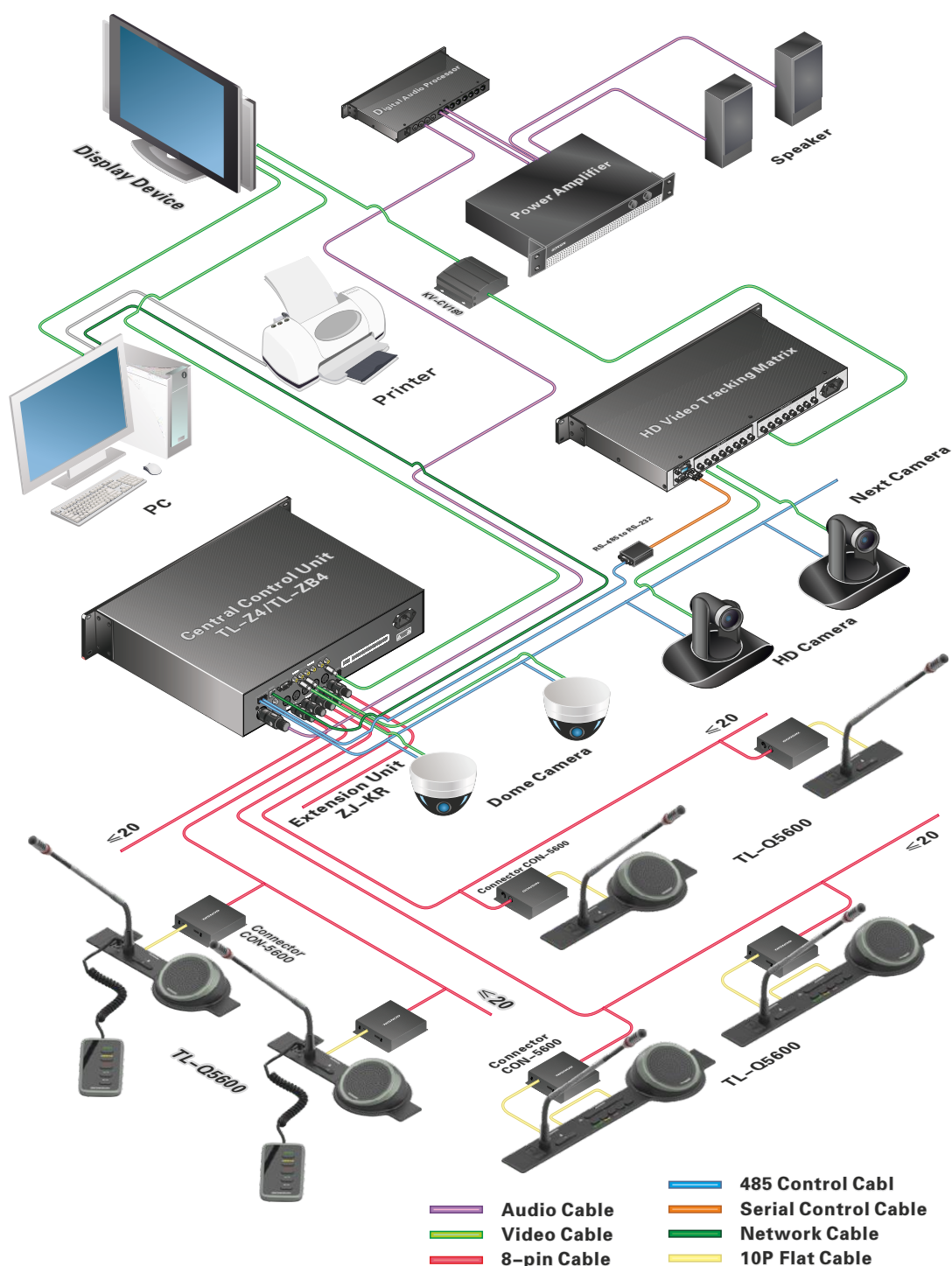
◆ **Interpreter Cable 25P-3/5/10**

|  |                          |
|--|--------------------------|
| Type   | 25P one male, one female |
| Length   | 3m/5m/10m                |
| Interface  | DB25                     |
| Note: One 3m and one 10m for one interpreter console |                          |



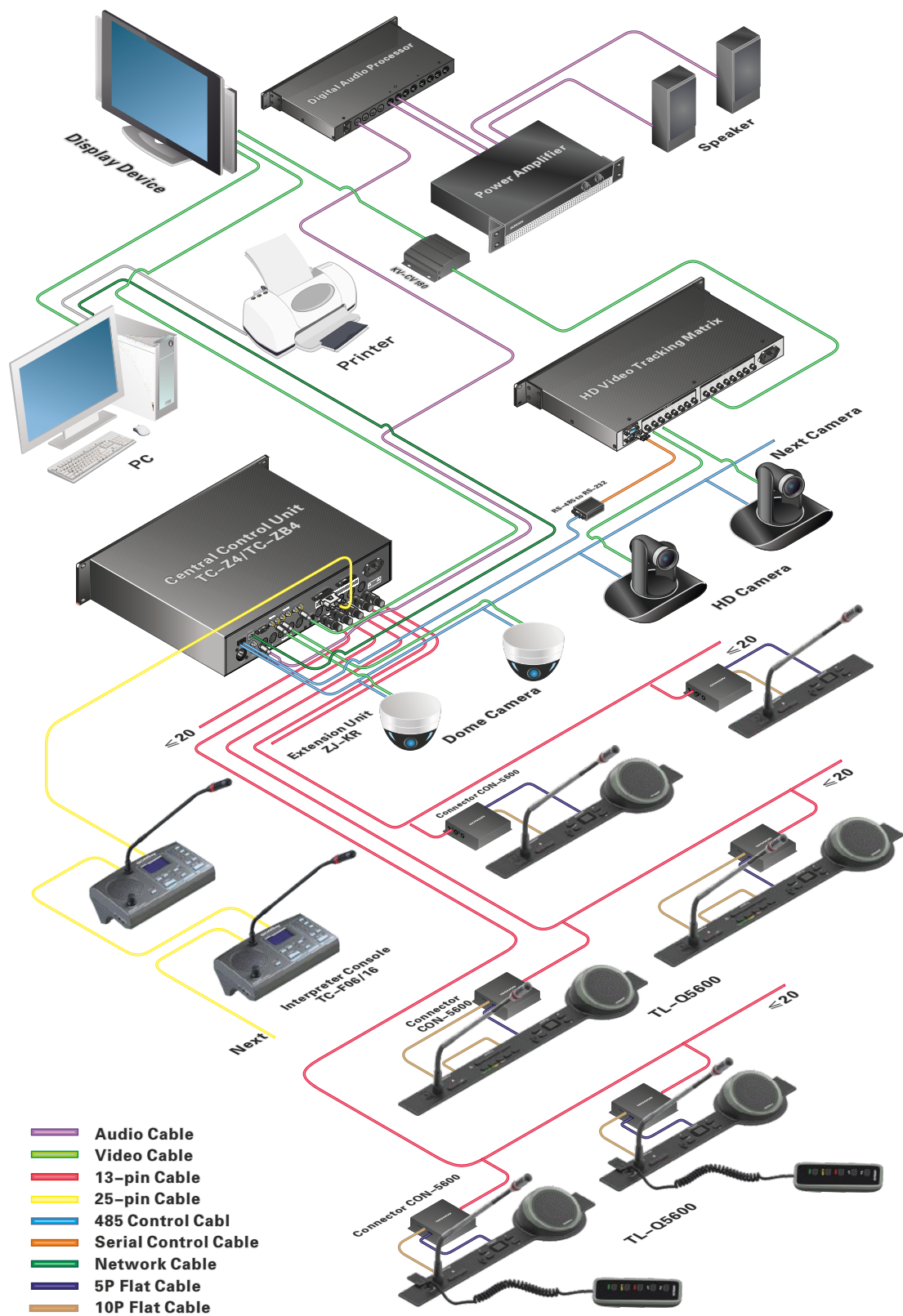


# ◆ System Configuration



● System connection diagram for discussion / voting





● System connection diagram for discussion / voting / interpretation



## ◆ System Components

### ◆ TL-VQ5600+BJ-Q5600/BJ-K5600 Discussion system with voting

| DESCRIPTION                    | MODEL      | QTY/PCS | Remark     |
|--------------------------------|------------|---------|------------|
| Central Control Unit           | TL-ZB4     | 1       |            |
| Chairman Discussion Unit       | TL-VXQ5600 | 1       |            |
| Delegate Discussion Unit       | TL-VDQ5600 | N       |            |
| Flush Voting Unit              | BJ-Q5600   | N       | one in two |
| Handheld Voting Keypad         | BJ-K5600   | N       |            |
| Connector (conjunction box)    | CON-5600   | N       |            |
| Conference Management Software | V7.1.0     | 1       |            |
| Extension Unit                 | ZJ-KR      | N       | Optional   |
| IC Card                        | BL7442     | N       | Optional   |
| IC Card Encoder                | SRD-U100   | 1       | Optional   |

### ◆ TL-VQ5600+TC-Q5600 Discussion system with interpretation

| DESCRIPTION                                   | MODEL      | QTY/PCS | Remark   |
|---|------------|---------|----------|
| Central Control Unit                          | TC-ZB4     | 1       |          |
| Chairman Discussion Unit                      | TL-VXQ5600 | 1       |          |
| Delegate Discussion Unit                      | TL-VDQ5600 | N       |          |
| Channel Selection Unit, with volume control   | TC-Q5600   | N       |          |
| Loudspeaker                                   | SPK-10     | N       | Optional |
| Connector (conjunction box)                   | CON-5600   | N       |          |
| Extension Unit                                | ZJ-KR      | N       | Optional |
| Conference Management Software                | V7.1.0     | 1       | Optional |
| Interpreter Console with gooseneck microphone | TC-F06     | N       |          |
| Interpreter Headset                           | TC-D4      | N       |          |
| Stereo Headphone                              | TC-D3      | N       | Optional |
| Monaural Headphone                            | TC-D1      | N       | Optional |



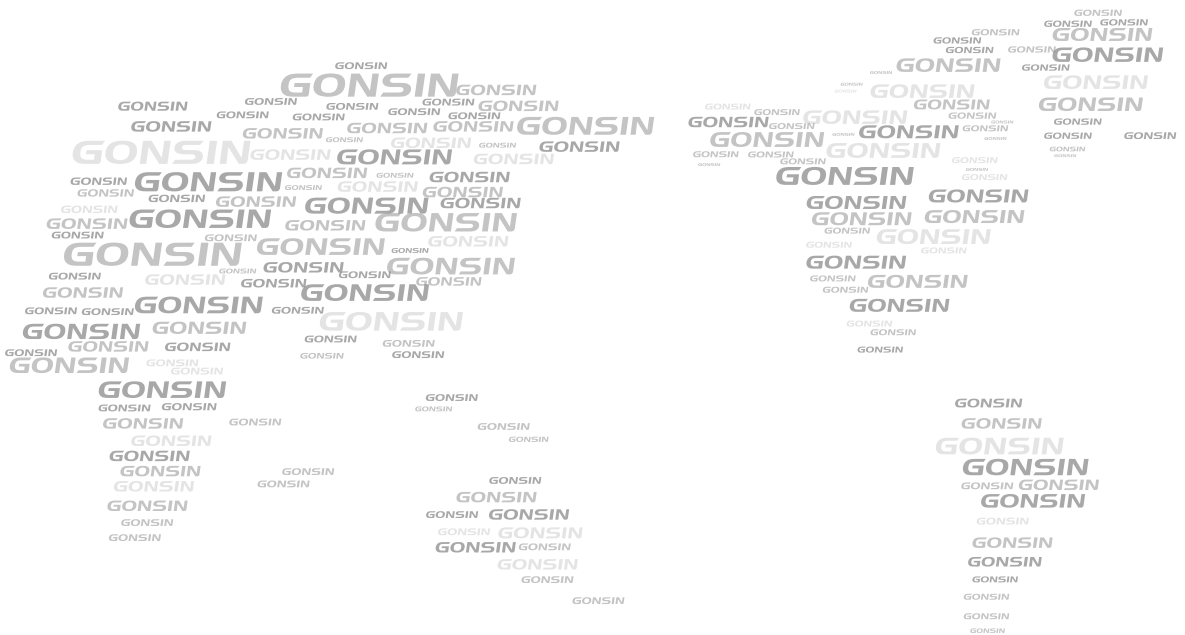
◆ **TL-VQ5600+TC-Q5600+BJ-Q5600/BJ-K5600**  
**Discussion system with interpretation and voting**

| DESCRIPTION                                   | MODEL      | QTY/PCS | Remark     |
|---|------------|---------|------------|
| Central Control Unit                          | TC-ZB4     | 1       |            |
| Chairman Discussion Unit                      | TL-VXQ5600 | 1       |            |
| Delegate Discussion Unit                      | TL-VDQ5600 | N       |            |
| Flush Voting Unit                             | BJ-Q5600   | N       | one in two |
| Handheld Voting Keypad                        | BJ-K5600   | N       |            |
| Channel Selection Unit, with volume control   | TC-Q5600   | N       |            |
| Loudspeaker                                   | SPK-10     | N       | Optional   |
| Connector (conjunction box)                   | CON-5600   | N       |            |
| Conference Management Software                | V7.1.0     | 1       |            |
| Extension Unit                                | ZJ-KR      | N       | Optional   |
| IC Card                                       | BL7442     | N       | Optional   |
| IC Card Encoder                               | SRD-U100   | 1       | Optional   |
| Interpreter Console with gooseneck microphone | TC-F06     | N       |            |
| Interpreter Headset                           | TC-D4      | N       |            |
| Stereo Headphone                              | TC-D3      | N       | Optional   |
| Monaural Headphone                            | TC-D1      | N       | Optional   |

◆ **TL-VQ5600 Discussion system**

| DESCRIPTION                 | MODEL      | QTY/PCS | Remark   |
|-----------------------------|------------|---------|----------|
| Central Control Unit        | TL-Z4      | 1       |          |
| Chairman Discussion Unit    | TL-VXQ5600 | 1       |          |
| Delegate Discussion Unit    | TL-VDQ5600 | N       |          |
| Connector (conjunction box) | CON-5600   | N       |          |
| Extension Unit              | ZJ-KR      | N       | Optional |





GONSIN CONFERENCE EQUIPMENT CO.,LTD.  
[www.gonsin.com](http://www.gonsin.com)



English WeChat



All rights reserved. The information and specifications included are subject to change without prior notice.